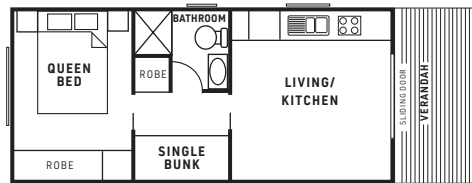


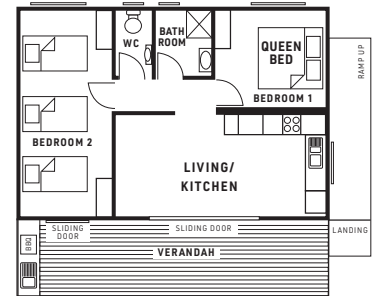


Cabin layouts for Bulli Beach Tourist Park

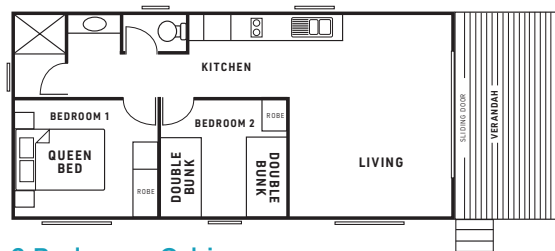
Note: Cabin layouts are not to scale and are subject to change.



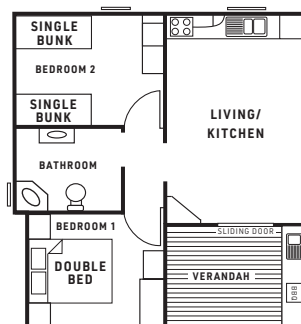
1 Bedroom Cabin
Sleeps 4



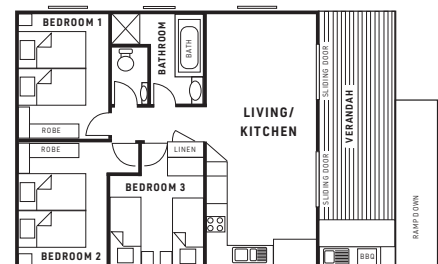
2 Bedroom Cabin
Sleeps 5



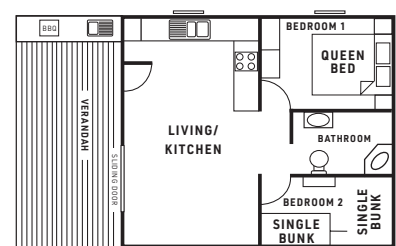
2 Bedroom Cabin
Sleeps 4



2 Bedroom Family Cabin
Sleeps 6



3 Bedroom Cabin
Sleeps 6



2 Bedroom Cabin
Sleeps 6

Bulli Beach Tourist Park
1 Farrell Road, Bulli NSW
p. 02 4227 8991
e. bullitp@wollongong.nsw.gov.au

Our other parks

Corrimal Beach Tourist Park
2 Lake Parade, East Corrimal NSW
p. 02 4227 8992
e. corrimaltp@wollongong.nsw.gov.au

Windang Beach Tourist Park
11 Fern Street, Windang NSW
p. 02 4227 8993
e. windangtp@wollongong.nsw.gov.au

Bulli Beach Tourist Park

OFF SEASON: First day to second last day of NSW Department of Education School terms

SHOULDER SEASON: Commencing the final day of NSW Department of Education School terms up to and including the day prior to commencement of next School term (excluding On/Peak Season)

ON SEASON: NSW Department of Education Christmas School Holidays, and Australia Day Long Weekend, Easter Long Weekend and Labour Day Long Weekend

Schedule of Fees and Charges


1 July 2026 to 26 June 2027

This schedule is a guide only. Visit our website www.wollongongtouristparks.com.au for the full Revenue Policy. All prices quoted are in Australian Dollars and include GST.

- Off and Shoulder season: deposit only accepted at time of booking, balance to be paid upon check-in.
- Credit cards used for the payment of the deposits must be presented on check-in.
- Photo identification is required on check-in.

Off Season	Shoulder Season	On Season
Nightly	Nightly	Nightly

On-site accommodation - Prices provided on a per cabin basis

3 Bedroom Cabin - sleeps 6 Cabins C09, C13, C21 and C23 - queen beds (2) and single beds (C13 bunk), bath and separate shower, fully equipped kitchen, washer and dryer, air conditioning, TV, DVD player, large undercover verandah and private BBQ.	\$294	\$351	\$430
2 Bedroom Cabin - sleeps 6 Cabins C03-C04 and C06-C08 - queen bed and single bunks (4 beds), shower over bath (C03,C04 & C08), separate bath and shower (C06 & C07), fully equipped kitchen, washer and dryer, air conditioning, TV, DVD player, large undercover verandah with ocean views and private BBQ.	\$257	\$306	\$387
 Cabin C05 - constructed to Australian Standard requirements for wheelchair and disabled access. queen bed, double bed and single bunks, ensuite, fully equipped kitchen, washer and dryer, air conditioning, TV, DVD player, large undercover verandah with ocean views and private BBQ.			
2 Bedroom Family Cabin - sleeps 6 Cabins C27-C30 - queen bed and single bunks (4 beds), ensuite with shower over large spa, fully equipped kitchenette (no oven), air conditioning, TV, DVD player, undercover verandah and private BBQ.	\$231	\$282	\$348
2 Bedroom Cabin - sleeps 5 Cabins C01, C02, C10-C12, C14, C15, C16, C17 and C22 - queen bed and single beds (3), bathroom (shower only), separate WC, fully equipped kitchen, reverse cycle air conditioning, TV, DVD player, large undercover verandah with ocean views and private BBQ.	\$231	\$282	\$348
2 Bedroom Cabin - sleeps 4 Cabins C18, C19 - queen bed and single beds (2), bathroom (shower only), fully equipped kitchen, TV, DVD player, reverse cycle air conditioning and undercover verandah.	\$210	\$257	\$317
1 Bedroom Cabin - sleeps 4 Cabins C24-C26 - queen bed and single bunks, fully equipped kitchen, bathroom (shower only), TV, DVD player, air conditioning and undercover verandah.	\$181	\$220	\$270

Cabin booking fee	Equivalent Nightly Rate		
--------------------------	-------------------------	--	--

Caravan and camping sites - Prices provided on a 2 person basis (maximum 8 persons per site) and includes one car and/or caravan/trailer/tent

Ensuite site	\$79.50	\$95.50	\$120
Ensuite site - Seniors Card Holder Discount (card to be presented on arrival)	\$63.50	\$79.50	\$95.50
Drive through powered site	\$57.50	\$68	\$83
Drive through powered site - Seniors Card Holder Discount (card to be presented on arrival)	\$48	\$57.50	\$69
Powered site	\$48	\$58	\$72.50
Powered site - Seniors Card Holder Discount (card to be presented on arrival)	\$40	\$48	\$59
Unpowered site	\$38	\$48	\$59
Unpowered site - Seniors Card Holder Discount (card to be presented on arrival)	\$31	\$38	\$48
Site booking fee	Equivalent Nightly Rate		

Function Hall Hire - Closed between 10pm and 6am. Prices include use of video and audio equipment and kitchenette

1 to 6 hours	\$46 per hour
Full day hire (6+ hours in 24 hour period)	\$239

Extra charges

Extra persons (5-17 years) - caravan and camping sites	\$19 nightly
Extra persons (5-17 years) - caravan and camping sites (OFF SEASON ONLY - maximum of two extra persons per site)	Free
Extra persons (18 years and over) - caravan and camping sites	\$26 nightly
Additional car, trailer or boat (no more than one of either per site)	\$19 nightly, \$92 weekly
Late check out up to 4pm (conditions apply)	50% of equivalent nightly rate
Late check out after 4pm (conditions apply)	Full nightly rate
Mid stay clean and/or linen change or linen swap	\$35 - \$73.50 per service
Cancellation fee - Notification less than 14 days prior to arrival (except on/peak season)	Equivalent nightly rate
On/peak season booking cancellation fee - notification within 8 weeks and until 15 days prior to arrival	Equivalent nightly rate
On/peak season booking cancellation fee - notification less than 14 days prior to arrival	Full cost of booking
Property damage or cabin cleaning charge - costs assoc. with repair/replacement of property or extra cleaning	Min \$246 up to cost
Breach charge - costs associated with rectification necessitated by breach/es of Park Rules and/or conditions of occupation	At Cost
Hire charge - for items such as beach towels, board games etc. (bond applicable)	\$3.70 - \$134 per item
Single use of dump point	\$7.10 per use
Single or day use of park amenities block	\$6 - \$9 per person
Costs associated replacement of broken and lost keys and lock replacement (Min.Fee)	\$25