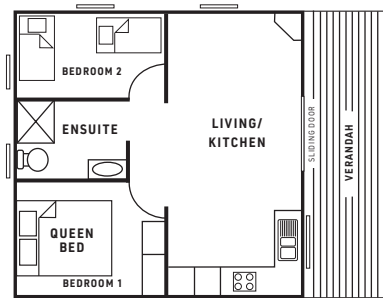


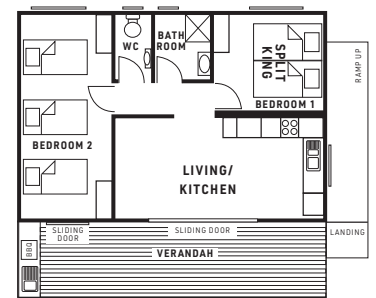


Cabin layouts for Windang Beach Tourist Park

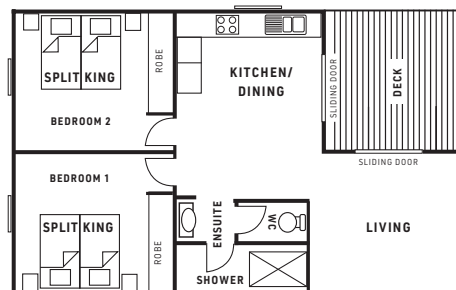
Note: Cabin layouts are not to scale and are subject to change.



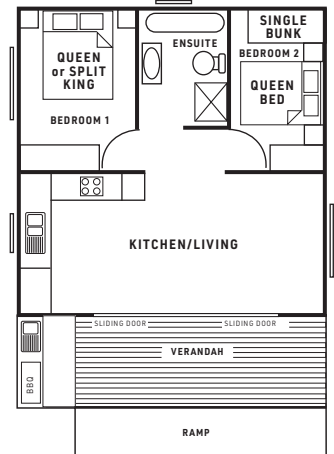
2 Bedroom Cabin
Sleeps 4



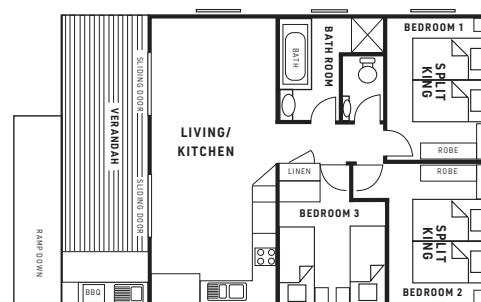
2 Bedroom Cabin
Sleeps 5



2 Bedroom Cabin
Sleeps 4



2 Bedroom Cabin
Sleeps 6



3 Bedroom Cabin
Sleeps 6

Windang Beach Tourist Park
11 Fern Street, Windang NSW
p. 02 4227 8993
e. windangtp@wollongong.nsw.gov.au

Our other parks

Bulli Beach Tourist Park
1 Farrell Road, Bulli NSW
p. 02 4227 8991
e. bullitp@wollongong.nsw.gov.au

Corrimal Beach Tourist Park
2 Lake Parade, East Corrimal NSW
p. 02 4227 8992
e. corrimaltp@wollongong.nsw.gov.au

Windang Beach Tourist Park

OFF SEASON: First day to second last day of Board of Studies NSW School terms

Term 3: 22 July to 27 September 2024

Term 4: 14 October to 19 December 2024

Term 1: 31 January to 11 April 2025

Term 2: 28 April to 4 July 2025

SHOULDER SEASON:

Commencing the final day of Board of Studies NSW School terms up to and including the day prior to commencement of next School term (excluding On/Peak Season)

ON SEASON:

Board of Studies NSW Christmas School Holidays, and Australia Day Long Weekend, Easter Long Weekend and Labour Day Long Weekend

Schedule of Fees and Charges

1 July 2024 to 30 June 2025

This schedule is a guide only. Visit our website www.wollongongtouristparks.com.au for the full Revenue Policy. All prices quoted are in Australian Dollars and include GST.

- Off and Shoulder season: deposit only accepted at time of booking, balance to be paid upon check-in.
- Credit cards used for the payment of the deposits must be presented on check-in.
- Photo identification is required on check-in.

Off Season

Shoulder Season

On Season

Nightly

Nightly

Nightly

On-site accommodation - Prices provided on a per cabin basis

3 Bedroom Cabin - sleeps 6

Cabins 23 and 24 - split king beds (2) and single bunks, bathroom with bath and separate shower, fully equipped kitchen, washer and dryer, air conditioning, large undercover verandah with lake views and private BBQ.

Cabin 25 - constructed to Australian Standard requirements for wheelchair and disabled access, split king beds (2) and single bunks, ensuite with shower, fully equipped kitchen, washer and dryer, air conditioning, large undercover verandah with lake views and private BBQ.

Cabins 26 - 31 - split king beds (3), bathroom with bath and separate shower, separate WC, fully equipped kitchen with dishwasher, washer and dryer, air conditioning, large undercover verandah with private BBQ (Note: 29-31 no dishwasher).

\$268

\$320

\$393

2 Bedroom Cabin - sleeps 6

Cabins 20, 21 and 22 - Cabin 20 - Queen beds and two single bunks. Cabin 21 and 22 - queen beds (2) and single bunks. Bathroom with bath and separate shower, fully equipped kitchen, washer and dryer, air conditioning, TV, large undercover verandah with lake views and private BBQ.

\$234

\$279

\$353

2 Bedroom Cabin - sleeps 5

Cabins 11 - 13 and 33 - 38 - split king beds (2) and single bed, ensuite, separate WC, fully equipped kitchen, reverse cycle air conditioning, TV, large undercover verandah and private BBQ.

\$211

\$257

\$317

2 Bedroom Cabin - sleeps 4

Cabins 17, 18 and 19 - split king beds (2), ensuite, separate WC, fully equipped kitchen, reverse cycle air conditioning, TV and undercover verandah.

\$192

\$234

\$289

2 Bedroom Cabin - sleeps 4

Cabins 1 - 6 - queen bed and single beds (2), ensuite, fully equipped kitchenette (no oven), air conditioning, TV and undercover verandah.

\$165

\$201

\$246

Cabin booking fee

Equivalent Nightly Rate

Caravan and camping sites - Prices provided on a 2 person basis (maximum 8 persons per site) and includes one car and/or caravan/trailer/tent

Ensuite site

\$72

\$87

\$110

Ensuite site - senior card holder (card to be presented on arrival)

\$58

\$69

\$87

Drive through powered site

\$50

\$59

\$76

Drive through powered site - senior card holder (card to be presented on arrival)

\$39

\$47

\$60

Powered site

\$44

\$53

\$66

Powered site - senior card holder (card to be presented on arrival)

\$36

\$44

\$54

Unpowered site

\$35

\$44

\$54

Unpowered site - senior card holder (card to be presented on arrival)

\$28

\$34

\$44

Site booking fee

Equivalent Nightly Rate

Extra charges

Extra persons (5-17 years) - caravan and camping sites

\$18 nightly

Extra persons (5-17 years) - caravan and camping sites (OFF SEASON ONLY - maximum of two extra persons per site)

Free

Extra persons (18 years and over) - caravan and camping sites

\$25 nightly

Additional car, trailer or boat (no more than one of either per site)

\$17 nightly/\$84 weekly

Late check out up to 4pm (conditions apply)

50% of equivalent nightly rate

Late check out after 4pm (conditions apply)

Full nightly rate

Mid stay clean and/or linen change or linen swap

\$32 - \$67 per service

Cancellation fee - notification less than 14 days prior to arrival (except on/peak season)

Equivalent nightly rate

On/peak season booking cancellation fee - notification within 8 weeks and until 15 days prior to arrival

Equivalent nightly rate

On/peak season booking cancellation fee - notification less than 14 days prior to arrival

Full cost of booking

Property damage or cabin cleaning charge - costs assoc. with repair/replacement of property or extra cleaning.

\$224

Breach charge - costs associated with rectification necessitated by breach/es of Park Rules and/or conditions of occupation

At Cost

Single use of dump point (non-guest)

\$5 per use

Single or day use of park amenities block

\$4 - \$7 per person

Costs associated replacement of broken and lost keys and lock replacement (Min.Fee)

\$23