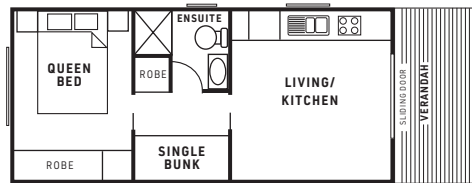


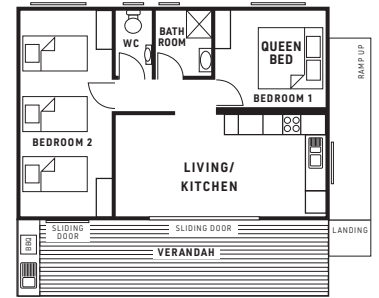


Cabin layouts for Bulli Beach Tourist Park

Note: Cabin layouts are not to scale and are subject to change.



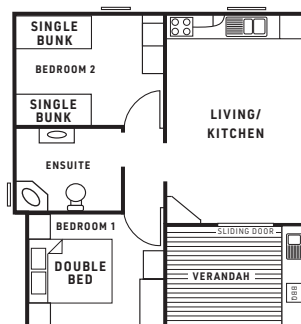
1 Bedroom Cabin
Sleeps 4



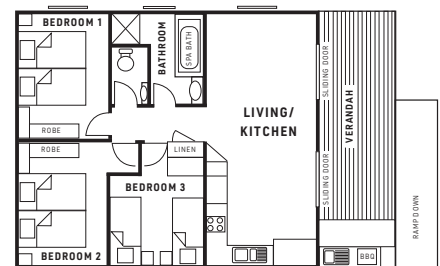
2 Bedroom Cabin
Sleeps 5



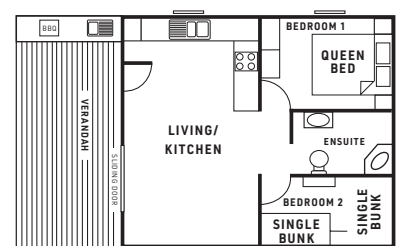
2 Bedroom Cabin
Sleeps 4



2 Bedroom Family Cabin
Sleeps 6



3 Bedroom Cabin
Sleeps 6



2 Bedroom Cabin
Sleeps 6

Bulli Beach Tourist Park
1 Farrell Road, Bulli NSW
p. 02 4227 8991
e. bullitp@wollongong.nsw.gov.au

Our other parks

Corrimal Beach Tourist Park
2 Lake Parade, East Corrimal NSW
p. 02 4227 8992
e. corrimaltp@wollongong.nsw.gov.au

Windang Beach Tourist Park
11 Fern Street, Windang NSW
p. 02 4227 8993
e. windangtp@wollongong.nsw.gov.au

Bulli Beach Tourist Park

OFF SEASON: First day to second last day of Board of Studies NSW School terms

Term 3: 22 July to 27 September 2024

Term 4: 14 October to 20 December 2024

Term 1: 31 January to 11 April 2025

Term 2: 28 April to 4 July 2025

SHOULDER SEASON:

Commencing the final day of Board of Studies NSW School terms up to and including the day prior to commencement of next School term (excluding On/Peak Season)

ON SEASON:

Board of Studies NSW Christmas School Holidays, and Australia Day Long Weekend, Easter Long Weekend and Labour Day Long Weekend

Schedule of Fees and Charges


1 July 2024 to 30 June 2025

This schedule is a guide only. Visit our website www.wollongongtouristparks.com.au for the full Revenue Policy. All prices quoted are in Australian Dollars and include GST.

- Off and Shoulder season: deposit only accepted at time of booking, balance to be paid upon check-in.
- Credit cards used for the payment of the deposits must be presented on check-in.
- Photo identification is required on check-in.

Off Season	Shoulder Season	On Season
Nightly	Nightly	Nightly

On-site accommodation - Prices provided on a per cabin basis

3 Bedroom Cabin - sleeps 6 Cabins C09, C13, C21 and C23 - queen beds (2) and single beds (C13 bunk), ensuite with bath, fully equipped kitchen, washer and dryer, air conditioning, TV, DVD player, large undercover verandah and private BBQ.	\$268	\$320	\$393
2 Bedroom Cabin - sleeps 6 Cabins C03-C04 and C06-C08 - queen bed and single bunks (4 beds), shower over bath (C03,C04 & C08), separate bath and shower (C06 & C07), fully equipped kitchen, washer and dryer, air conditioning, TV, DVD player, large undercover verandah with ocean views and private BBQ.  Cabin C05 - constructed to Australian Standard requirements for wheelchair and disabled access , queen bed, double bed and single bunks, ensuite, fully equipped kitchen, washer and dryer, air conditioning, TV, DVD player, large undercover verandah with ocean views and private BBQ.	\$234	\$279	\$353
2 Bedroom Family Cabin - sleeps 6 Cabins C27-C30 - queen bed and single bunks (4 beds), ensuite with shower over large spa, fully equipped kitchenette (no oven), air conditioning, TV, DVD player, undercover verandah and private BBQ.	\$211	\$257	\$317
2 Bedroom Cabin - sleeps 5 Cabins C01, C02, C10-C12, C15, C16, C17 and C22 - queen bed and single beds (3), ensuite, separate WC, fully equipped kitchen, reverse cycle air conditioning, TV, DVD player, large undercover verandah with ocean views and private BBQ.	\$211	\$257	\$317
2 Bedroom Cabin - sleeps 4 Cabins C18, C19 - queen bed and single beds (2), ensuite, fully equipped kitchen, TV, DVD player, reverse cycle air conditioning and undercover verandah.	\$192	\$234	\$289
1 Bedroom Cabin - sleeps 4 Cabins C24-C26 - queen bed and single bunks, fully equipped kitchen, ensuite, TV, DVD player, air conditioning and undercover verandah.	\$165	\$201	\$246
Cabin booking fee	Equivalent Nightly Rate		

Caravan and camping sites - Prices provided on a 2 person basis (maximum 8 persons per site) and includes one car and/or caravan/trailer/tent

Ensuite site	\$72	\$87	\$110
Ensuite site - senior card holder (card to be presented on arrival)	\$58	\$69	\$87
Drive through powered site	\$50	\$59	\$76
Drive through powered site - senior card holder (card to be presented on arrival)	\$39	\$47	\$60
Powered site	\$44	\$53	\$66
Powered site - senior card holder (card to be presented on arrival)	\$36	\$44	\$54
Unpowered site	\$35	\$44	\$54
Unpowered site - senior card holder (card to be presented on arrival)	\$28	\$34	\$44
Site booking fee	Equivalent Nightly Rate		

Function Hall Hire - Closed between 10pm and 6am. Prices include use of video and audio equipment and kitchenette

1 to 6 hours	\$42 per hour
Full day hire (6+ hours in 24 hour period)	\$218

Extra charges

Extra persons (5-17 years) - caravan and camping sites	\$18 nightly
Extra persons (5-17 years) - caravan and camping sites (OFF SEASON ONLY - maximum of two extra persons per site)	Free
Extra persons (18 years and over) - caravan and camping sites	\$25 nightly
Additional car, trailer or boat (no more than one of either per site)	\$17 nightly, \$84 weekly
Late check out up to 4pm (conditions apply)	50% of equivalent nightly rate
Late check out after 4pm (conditions apply)	Full nightly rate
Mid stay clean and/or linen change or linen swap	\$32 - \$67 per service
Cancellation fee - Notification less than 14 days prior to arrival (except on/peak season)	Equivalent nightly rate
On/peak season booking cancellation fee - notification within 8 weeks and until 15 days prior to arrival	Equivalent nightly rate
On/peak season booking cancellation fee - notification less than 14 days prior to arrival	Full cost of booking
Property damage or cabin cleaning charge - costs assoc. with repair/replacement of property or extra cleaning	\$224
Breach charge - costs associated with rectification necessitated by breach/es of Park Rules and/or conditions of occupation	At Cost
Hire charge - for items such as beach towels, board games etc. (bond applicable)	\$3 - \$122 per item
Single use of dump point	\$5 per use
Single or day use of park amenities block	\$4 - \$7 per person
Costs associated replacement of broken and lost keys and lock replacement (Min.Fee)	\$23