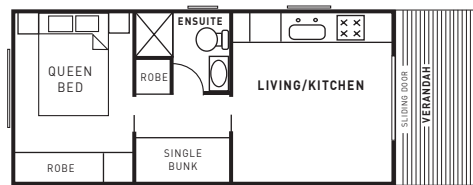


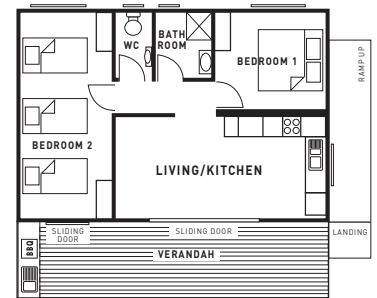


## Cabin layouts for Bulli Beach Tourist Park

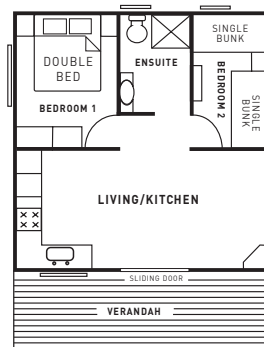
Note: Cabin layouts are not to scale and are subject to change.



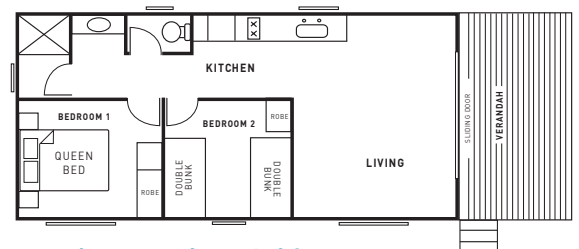
**1 Bedroom Ensuite Cabin**  
Sleeps 4



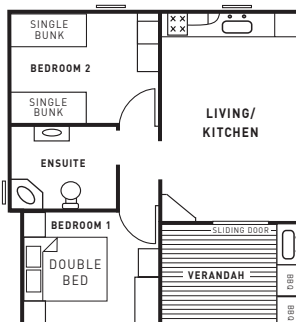
**2 Bedroom Deluxe Cabin**  
Sleeps 5



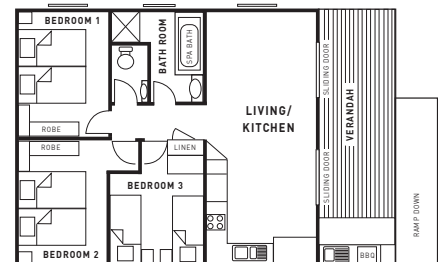
**2 Bedroom Ensuite Cabin**  
Sleeps 5



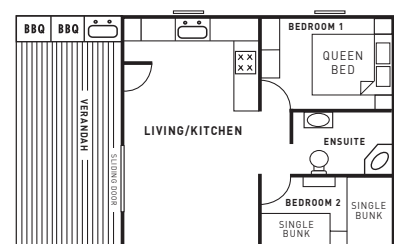
**2 Bedroom Deluxe Cabin**  
Sleeps 4



**2 Bedroom Family Cabin**  
Sleeps 6



**3 Bedroom Deluxe Cabin**  
Sleeps 6



**2 Bedroom Deluxe Cabin**  
Sleeps 6

**Bulli Beach Tourist Park**  
1 Farrell Road, Bulli NSW  
p. 02 4285 5677  
e. bullitp@wollongong.nsw.gov.au

### Our other parks

**Corrimal Beach Tourist Park**  
2 Lake Parade, East Corrimal NSW  
p. 02 4285 5688  
e. corrimaltp@wollongong.nsw.gov.au

**Windang Beach Tourist Park**  
11 Fern Street, Windang NSW  
p. 02 4297 3166  
e. windangtp@wollongong.nsw.gov.au

# Bulli Beach Tourist Park

**OFF SEASON:** First day to second last day of Board of Studies NSW School terms

**Term 3:** 12 July to 17 September 2021

**Term 4:** 5 October to 17 December 2021

**Term 1:** 28 January to 8 April 2022

**Term 2:** 26 April to 1 July 2022

**SHOULDER SEASON:**

Commencing the final day of Board of Studies NSW School terms up to and including the day prior to commencement of next School term (excluding On/Peak Season)

**ON SEASON:**

Board of Studies NSW Christmas School Holidays, and Australia Day Long Weekend, Easter Long Weekend and Labour Day Long Weekend

## Schedule of Fees and Charges


### 1 July 2021 to 30 June 2022

This schedule is a guide only. Visit our website [www.wollongongtouristparks.com.au](http://www.wollongongtouristparks.com.au) for the full Revenue Policy. All prices quoted are in Australian Dollars and include GST.

- Off and Shoulder season: deposit only accepted at time of booking, balance to be paid upon check-in.
- Credit cards used for the payment of the deposits must be presented on check-in.
- Photo identification is required on check-in.

Off Season	Shoulder Season	On Season
Nightly	Nightly	Nightly

#### On-site accommodation - Prices provided on a per cabin basis

<b>3 Bedroom Deluxe - sleeps 6</b> Cabins C09, C13, C21 and C23 - queen beds (2) and single beds, ensuite with spa, fully equipped kitchen, washer and dryer, air conditioning, TV, DVD player, large undercover verandah and private BBQ.	\$239	\$286	\$351
<b>2 Bedroom Deluxe - sleeps 6</b> Cabins C03-C04 and C06-C08 - queen bed and single bunks (4), ensuite with spa, fully equipped kitchen, washer and dryer, air conditioning, TV, DVD player, large undercover verandah with ocean views and private BBQ.  <b>Cabin C05</b> - constructed to Australian Standard requirements for wheelchair and disabled access, queen bed, double bed and single bunks, ensuite, fully equipped kitchen, washer and dryer, air conditioning, TV, DVD player, large undercover verandah with ocean views and private BBQ.	\$209	\$249	\$315
<b>2 Bedroom Family - sleeps 6</b> Cabins C27-C30 - queen bed and single bunks (4), ensuite with spa, fully equipped kitchenette (no oven), air conditioning, TV, DVD player, undercover verandah and private BBQ.	\$188	\$229	\$283
<b>2 Bedroom Deluxe - sleeps 5</b> Cabins C01, C02, C10-C12, C15, C16, C17 and C22 - queen bed and single beds (3), ensuite, separate WC, fully equipped kitchen, reverse cycle air conditioning, TV, DVD player, large undercover verandah with ocean views and private BBQ.	\$188	\$229	\$283
<b>2 Bedroom Deluxe - sleeps 4</b> Cabins C18, C19 - queen bed and single beds (2), ensuite, fully equipped kitchen, TV, DVD player, reverse cycle air conditioning and undercover verandah .	\$172	\$209	\$258
<b>2 Bedroom Ensuite - sleeps 5</b> C31-C32 - double bed and single bunks (4), ensuite, fully equipped kitchenette (no oven), air conditioning, TV, DVD player and undercover verandah.	\$147	\$179	\$220
<b>1 Bedroom Ensuite - sleeps 4</b> Cabins C24-C26 - queen bed and single bunks, fully equipped kitchen, ensuite, TV, DVD player, air conditioning and undercover verandah.	\$147	\$179	\$220
<b>Cabin booking fee</b>	Equivalent Nightly Rate		

#### Caravan and camping sites - Prices provided on a 2 person basis (maximum 8 persons per site) and includes one car and/or caravan/trailer/tent

<b>Ensuite site</b>	\$65	\$78	\$98
Ensuite site - senior card holder	\$52	\$62	\$78
<b>Drive through powered site</b>	\$44	\$53	\$68
Drive through powered site - senior card holder	\$35	\$42	\$54
<b>Powered site</b>	\$39	\$47	\$59
Powered site - senior card holder	\$31	\$38	\$48
<b>Unpowered site</b>	\$31	\$38	\$48
Unpowered site - senior card holder	\$25	\$30	\$38
<b>Site booking fee</b>	Equivalent Nightly Rate		

#### Function Hall Hire - Closed between 10pm and 6am. Prices include use of video and audio equipment and kitchenette

1 to 6 hours	\$37.50 per hour
Full day hire (6+ hours in 24 hour period)	\$194

#### Extra charges

Extra persons (5-17 years) - caravan and camping sites	\$16 nightly
Extra persons (5-17 years) - caravan and camping sites (OFF SEASON ONLY - maximum of two extra persons per site)	Free
Extra persons (18 years and over) - caravan and camping sites	\$22 nightly
Additional car, trailer or boat (no more than one of either per site)	\$15 nightly, \$75 weekly
Late check out up to 4pm (conditions apply)	50% of equivalent nightly rate
Late check out after 4pm (conditions apply)	Full nightly rate
Weekly servicing of cabin - (includes clean and linen change)	\$38 per service
Cancellation fee - Notification less than 14 days prior to arrival (except on/peak season)	Equivalent nightly rate
On/peak season booking cancellation fee - notification within 8 weeks and until 15 days prior to arrival	Equivalent nightly rate
On/peak season booking cancellation fee - notification less than 14 days prior to arrival	Full cost of booking
Cabin cleaning charge - additional costs associated with extra cleaning and/or smoke removal	\$200
Breach charge - costs associated with rectification necessitated by breach/es of Park Rules and/or conditions of occupation	At Cost
Hire charge - for items such as beach towels, board games etc. (bond applicable)	\$2.20 - \$109 per item
Single use of park amenities block/dump point	\$4.10 per person/per use
Day use of park amenities block	\$7.10 per person
Last key or lost fob	up to \$70